

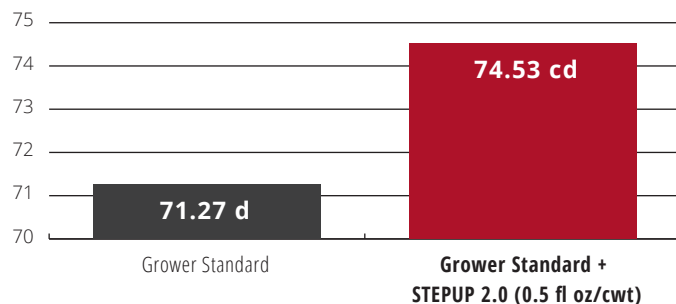
Take Your Seeds To The Next Level



- STEPUP® 2.0 is a nutritional seed treatment designed specifically to interact with and respond to the seed by supplementing protein and amino acids released during early stages of germination.
- This provides a faster, more uniform emergence, which could result in higher yields.
- STEPUP 2.0 is an optimized, concentrated formulation, allowing for reduced rates without having to sacrifice performance.

STEPUP 2.0 IMPROVES YIELD

Yield (bu/A)



+ STEPUP 2.0 provides 3.26 bu/A advantage over Grower Standard.

PDF238018WI01

GUARANTEED ANALYSIS

Total Nitrogen (N)2.00%
2.00% Water Soluble Nitrogen
DERIVED FROM: Soy Protein Hydrolysate

DIRECTIONS FOR USE

STEPUP 2.0 is recommended to be an additive to current standard seed treatments and is not intended to be used alone. Shake well before using. Use 0.5 - 1.0 fluid ounces of STEPUP 2.0 per 100-weight (cwt) of seed.

STEPUP 2.0 BENEFITS



Enhanced seedling growth



Increases metabolism



Stimulates the development of root fiber and root hairs



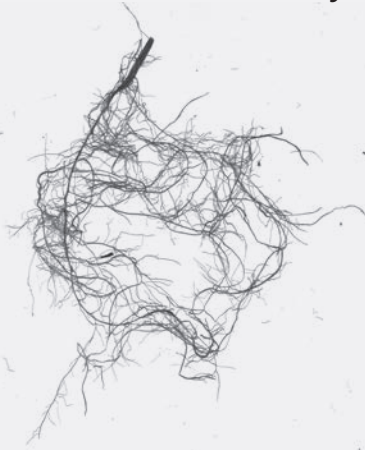
Induces and expresses natural disease tolerance

SEEING IS BELIEVING>

GET FASTER, MORE UNIFORM EMERGENCE

Soybean Roots

CONTROL



STEPUP 2.0



Trial #: BPS188018FL01

ENHANCE ROOT DEVELOPMENT



Scan the QR code for more information on STEPUP 2.0

ALL INFORMATION CONTAINED HEREIN IS PROVIDED "AS-IS", AND WILBUR-ELLIS COMPANY LLC ("WILBUR-ELLIS") HEREBY EXPRESSLY DISCLAIMS ANY AND ALL REPRESENTATIONS AND WARRANTIES WITH RESPECT TO THE INFORMATION CONTAINED HEREIN, WHETHER EXPRESS OR IMPLIED BY LAW OR OTHERWISE, INCLUDING, WITHOUT LIMITATION ANY WARRANTY OF COMPLETENESS OR ACCURACY AND ANY WARRANTY OF FITNESS FOR A PARTICULAR USE OR WARRANTY OF MERCHANTABILITY. WILBUR-ELLIS SHALL NOT BE LIABLE FOR ANY DIRECT, INDIRECT, CONSEQUENTIAL, SPECIAL, OR INCIDENTAL DAMAGES ARISING OUT OF USE OF THE INFORMATION CONTAINED HEREIN OR ANY SERVICES PROVIDED BY WILBUR-ELLIS RELATED THERETO. © 2024 Wilbur-Ellis Company LLC. This document is for information only and is not an offer to sell or buy any products or services. Prior to use, always read applicable labels, terms and conditions, and related documents for complete instructions, proper usage, and limitations. WILBUR-ELLIS logo, The Power of We, SEED TREATMENT logo, and STEPUP are registered trademarks, and SPARRA is a trademark of Wilbur-Ellis Company LLC. All other trademarks, service marks, trade names, trade dress, product names and logos appearing are the property of their respective owners. K-360831